



# FOOD, PEOPLE AND PLANET

*April 12, 2019*



**Barilla**  
**Center**  
FOR FOOD  
& NUTRITION

## Our Vision

---

To be a world leader in the promotion of **healthy** and **sustainable agro-food systems**

through innovative and distinctive initiatives  
that facilitate

adoption of **solutions** by  
decision-makers and stakeholders and

responsible **food choices** by people.



## Our Mission

---

The BCFN is an **independent multidisciplinary center** which aims to provide multiple outputs and contributions with high scientific contents and become over time a valuable tool for **Institutions, the Scientific Community, Media** and for **People**.

A privileged **meeting point** for anyone interested in food, the environment, sustainable growth and their implications on people's and society's life, at a national and international level.





## THE 3 GLOBAL FOOD PARADOXES

### DIE OF HUNGER OR OBESITY?

**821** million people suffer from hunger



**2.1** billion people are obese or overweight



### FEED PEOPLE, ANIMAL OR CARS?

The **47%** of the global crop production is dedicated to human nutrition



The **40%** is dedicated to produce animal feed or biofuel



### FEED WASTE OR FEED THE HUNGRY?

**1.3** billion tons of perfectly edible food are wasted

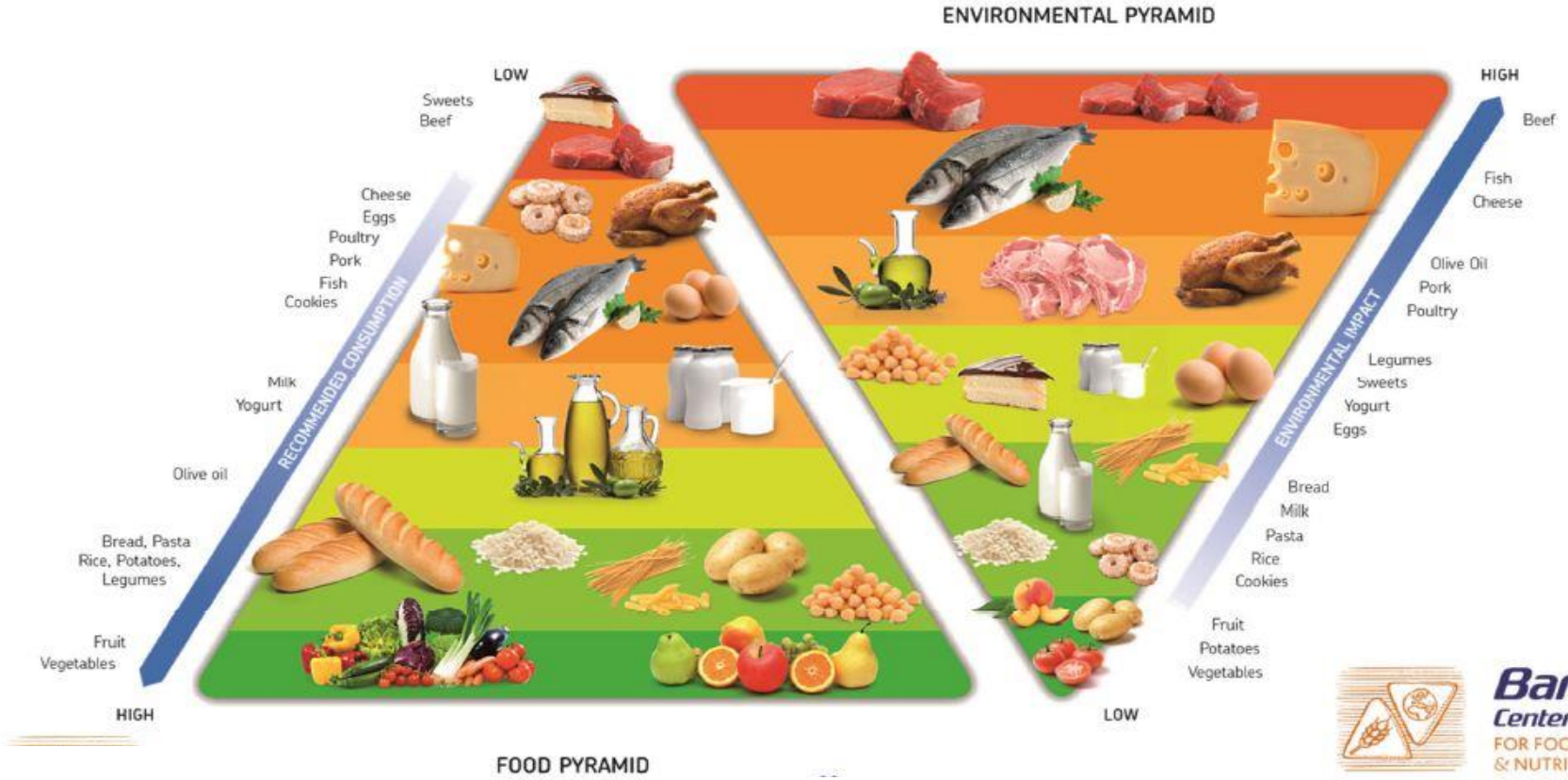


**4** times what it would take to feed the **821** million people who are hungry



# OUR FLAGSHIP CONCEPT

THE DOUBLE PYRAMID FOR ADULTS



GOOD FOR YOUR, SUSTAINABLE FOR THE ENVIRONMENT



## 2009 – 2019: OUR COMMITMENT

The Government signs and supports the **Milan Protocol** that have inspired the **Milan Charter for EXPO**



International partnership with **UN SDSN** has been consolidated during Intern'l Fora in **Brussels** and **NYC**



2009

2013

2014

2015

2016

2017

2018

2019



**Think Tank** inside Barilla, that analyse food and nutrition topics with a global approach



BCFN become a **foundation**

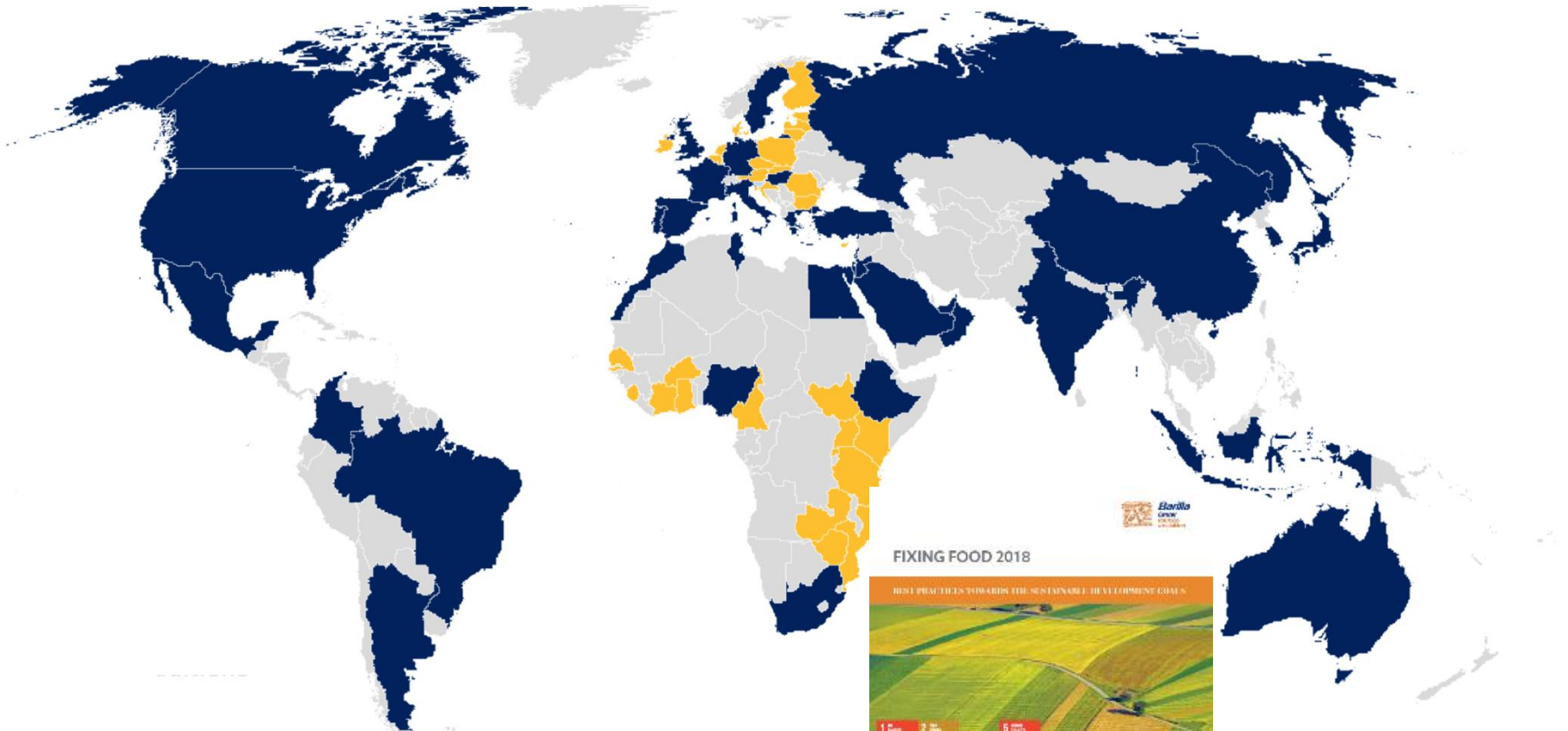


International scientific partnerships aiming at contributing to the global debate on food systems' sustainability, identifying and promoting **best practices**.

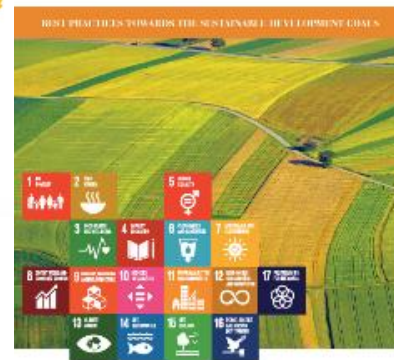
SDSN-BCFN joint roadmap towards the **SDG Summit** and **Climate Summit**



# FROM THE MILAN PROTOCOL TO THE FOOD SUSTAINABILITY INDEX



FIXING FOOD 2018



## FOOD SUSTAINABILITY INDEX

The Food Sustainability Index (FSI) ranks **67 countries** on food system sustainability. It is designed around the **2015 BCFN Milan Protocol** and the **Sustainable Development Goals** (SDGs). The country choice reflects a mix of high income, middle-income and low-income economies, with geographic representation. These countries represent over **90% of global GDP and over four-fifths of the global population.**

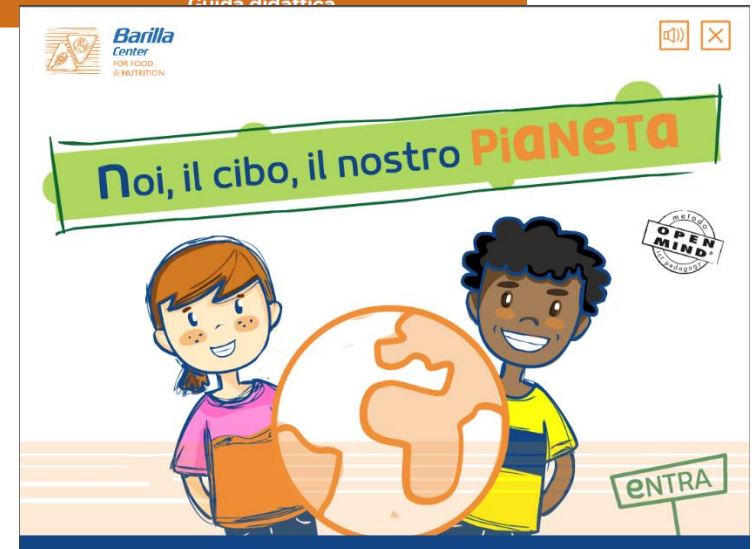
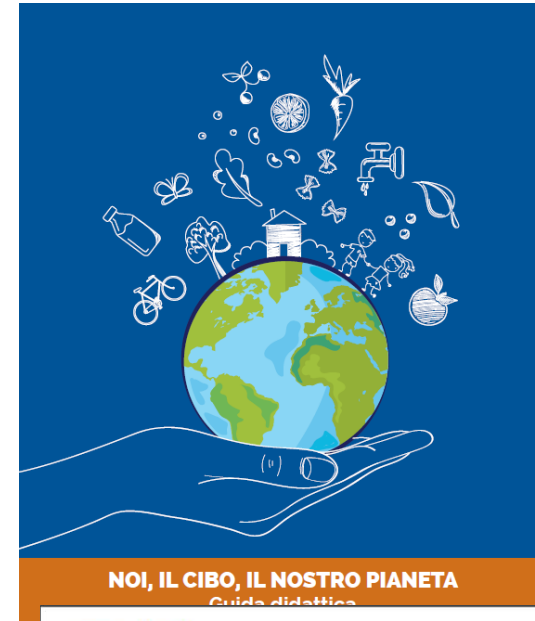




## WE, FOOD, OUR PLANET

**Aim:** providing teachers and students with a better understanding of the dynamics related to the food systems;  
Training Areas: sustainability, health and nutrition, food culture, food security;  
**Methodology:** long-distance learning (built on a dedicated platform) to train teachers and students, with a set of modules dedicated to different food-related themes.

**The project is part of a Memorandum of Understanding with the MIUR** (Italian Ministry of Education) and it officially started in September 2018.



**Massive Online Open Courses (MOOC)**  
**SUSTAINABLE FOOD SYSTEMS: A MEDITERRANEAN PERSPECTIVE**



**SDG**academy

edX

**3,478** USERS ENROLLED  
FROM MARCH TO DECEMBER 2018



**SU-EATABLE LIFE**



## SU-EATABLE LIFE

### THE PROJECT AT A GLANCE



Experiments in  
2 COUNTRIES



## THE PROJECT: WHAT AND HOW



SU-EATABLE LIFE aims at engaging EU citizens to adopt a **sustainable and healthy diet** with the long term objective to contribute to a substantial **reduction in GHG emissions and water saving** in the EU.

- **ANALYSIS & RESEARCH**
- **ENGAGEMENT & EXPERIMENTS**
- **OUTREACH**
- **REPLICATION**



# SAVE THE DATE

## INTERNATIONAL FORUM ON FOOD AND NUTRITION

Our roadmap towards a more sustainable food system.



December 3, 2019

